

# Anoctamin 1 Positive Esophageal Interstitial Cajal Cells in Late Stage Human Embryos

MUGUREL CONSTANTIN RUSU,<sup>1,2\*</sup> CRISTIAN VIOREL POALELUNGI,<sup>3</sup>  
ALEXANDRA DIANA VRAPCIU,<sup>4</sup> LUMINIȚA PĂDURARU,<sup>5</sup> ANDREEA  
CRISTIANA DIDILESCU,<sup>6</sup> AND CRISTINEL IONEL STAN<sup>7</sup>

<sup>1</sup>Division of Anatomy, Faculty of Dental Medicine, “Carol Davila” University of Medicine and Pharmacy, Bucharest, Romania

<sup>2</sup>MEDCENTER – Center of Excellence in Laboratory Medicine and Pathology

<sup>3</sup>Department of Obstetrics and Gynaecology, “Dr.I.Cantacuzino” Hospital, “Carol Davila” University of Medicine and Pharmacy, Bucharest, Romania

<sup>4</sup>Division of Anatomy, Faculty of Dental Medicine, “Carol Davila” University of Medicine and Pharmacy, Bucharest, Romania

<sup>5</sup>Division of Neonatology, “Mother and Child” Department, “Gr.T.Popa” University of Medicine and Pharmacy, Iasi, Romania

<sup>6</sup>Division of Embryology, Faculty of Dental Medicine, “Carol Davila” University of Medicine and Pharmacy, Bucharest, Romania

<sup>7</sup>Division of Anatomy, Faculty of Medicine, “Gr.T.Popa” University of Medicine and Pharmacy, Iasi, Romania

---

---

## ABSTRACT

Interstitial cells of Cajal (ICCs) are located in various smooth muscle organs and act as pacemaker cells, or ensure neuromodulation or mechanosensory roles. The study aims to investigate functional states of human ICCs in morphogenesis, focusing on the anoctamin 1 phenotype. The investigation was performed in five late stage human embryos with lengths varying between 23 and 29 mm. Immunohistochemistry on paraffin embedded specimens was performed for a series of antibodies:  $\alpha$ -smooth muscle actin ( $\alpha$ -SMA), desmin, CD31, CD34, CD117/c-kit, DOG1, and nestin. Longitudinal and circular muscle layers were  $\alpha$ -SMA+/desmin+/nestin+. An immature microvascular layer located in the inner submucosa was CD34+/CD31+/ $\alpha$ -SMA+/nestin+; endothelial tip cells were supporting active processes of sprouting angiogenesis. A CD34+/CD31- mesenchymal network was found in the circular muscle layer. CD117/c-kit+ multipolar ICCs with dichotomizing processes were found mostly in the myenteric plexus layer; processes were configuring a network within the circular muscle layer where intramuscular ICCs were scarcely found. A strong DOG1+ reaction was found for the ICCs of the myenteric plexus layer apposed on the outer surface of the circular muscle layer, and for the intramuscular ICCs. The evidence of a sublayer of DOG1+ myenteric

---

Grant sponsor: European Social Fund, Romanian Government; Grant number: POSDRU/107/1.5/82839.

All authors have contributed equally to this study.

\*Correspondence to: Mugurel Constantin Rusu MD, PhD, “Carol Davila” University of Medicine and Pharmacy 8, Eroilor Sanitari Blvd., RO-76241, Bucharest, Romania.  
E-mail: anatomon@gmail.com

Received 15 July 2013; Revised 21 September 2013; Accepted 18 October 2013.

DOI 10.1002/ar.22837

Published online 15 November 2013 in Wiley Online Library (wileyonlinelibrary.com).

ICCs is suggestive for a subpopulation of ICCs being qualified for pacemaking at this early developmental stage. *Anat Rec*, 297:301–307, 2014. © 2013 Wiley Periodicals, Inc.

**Key words:** *DOG1; nestin; endothelial tip cells; CD34; CD31; smooth muscle actin; embryology*

## INTRODUCTION

Interstitial cells of Cajal (ICCs) are resident cells of smooth muscle organs, in which they perform various functions (Rumessen and Thuneberg, 1982; Rumessen et al., 1982; Faussonne-Pellegrini and Cortesini, 1985; Thuneberg and Peters, 2001; Timmermans, 2001; Ward and Sanders, 2001; Sanders, 2006), such as pacemaker, mediator of neurotransmission and mechanosensory roles (Faussonne-Pellegrini et al., 1990; Faussonne-Pellegrini and Thuneberg, 1999; Timmermans, 2001; Huizinga and Faussonne-Pellegrini, 2005a).

CD117/c-kit is a transmembrane receptor tyrosine protein kinase (Young, 1999). CD117/c-kit antibodies reliably label ICCs (Young, 1999; Wu et al., 2000; Poole et al., 2004; Ciontea et al., 2005; Huizinga and Faussonne-Pellegrini, 2005b; Popescu et al., 2005; Huang et al., 2009; Suciuc et al., 2010; Rusu et al., 2011a,b). Networks built-up by ICCs are widely distributed within the intermuscular (ICC-MY), intramuscular (ICC-IM, ICC-DMP), and submucosal (ICC-SM) layers from the esophagus to the internal anal sphincter (Takaki, 2003). Recently, a novel cell type was described: the telocyte (Popescu and Faussonne-Pellegrini, 2010). It was discussed, on a rat experimental model, that in transmission electron microscopy the standards for differentiating ICCs from telocytes are quite similar, and the peculiar morphologies of telocytes, the telopodes (long, slender, and moniliform cell processes), should make in transmission electron microscopy the difference; moreover, the structural association with smooth muscle cells should direct the diagnosis toward ICCs (Rusu et al., 2012).

Anoctamin 1 has also been described as a specific marker of the ICCs (Hwang et al., 2009; Takaki et al., 2010; Chen et al., 2011; Sanders et al., 2012). In mice embryos, c-kit positive ICCs were also anoctamin 1 positive (He et al., 2012). The anoctamin-1 (*ANO1*, commonly known as *DOG1*) gene expression was found to be differentially expressed in gastrointestinal tumors, as compared with other mesenchymal tumors. It has also been demonstrated that *ANO1* may be expressed in esophageal and head and neck squamous cell carcinoma (West et al., 2004; Carles et al., 2006; Miettinen et al., 2009; Lee et al., 2010).

It was shown that neural crest cells (NCCs) colonize the embryonic gut from week 4 to week 7, and further coalesce to form the myenteric and submucosal plexuses. Smooth muscle differentiation follows the NCCs colonization. ICCs emerge from the gut mesenchyme (Wallace and Burns, 2005).

With regards to the esophageal ICCs morphogenesis in human, to our knowledge, only one study specifically

deals with this topic (Radenkovic et al., 2010). In that study, antibodies against c-kit, neuron specific enolase, smooth muscle actin, and desmin were used. The results revealed a continuous layer of esophageal c-kit positive cells surrounding by week 7 the elements of the myenteric plexus (Radenkovic et al., 2010).

It was thus hypothesized that in late stage human embryos anoctamin 1 may also be a key marker of the esophageal ICCs, thus contributing to the pacemaker machinery. Therefore, an immunohistochemical study was performed to test that hypothesis. Additional markers were designed to evaluate the esophageal structure in late stage embryos.

## MATERIALS AND METHOD

Five human embryos resulted from legal abortions were collected immediately postabortion. The lengths of these embryos varied between 23 and 29 mm, thus corresponding to late embryo stages (54–56 days) (Sadler and Langman, 2009). Approval for the present study was granted by the Bioethics Committee of the “Carol Davila” University of Medicine and Pharmacy, Bucharest, Romania.

Samples were fixed for 24 h in buffered formalin (8%) and were processed with an automatic histoprocessor (Diapath, Martinengo, BG, Italy) with paraffin embedding. Sections were cut manually at 3  $\mu$ m, and were mounted on SuperFrost® electrostatic slides for immunohistochemistry (Thermo Scientific, Menzel-Gläser, Braunschweig, Germany).

Histological evaluations used 3- $\mu$ m thick sections stained with hematoxylin and eosin.

Primary antibodies for CD117/c-kit (clone T595, Novocastra-Leica, Leica Biosystems Newcastle, Newcastle Upon Tyne, UK, 1:20), *DOG1* (clone K9, Novocastra-Leica, Leica Biosystems Newcastle, Newcastle Upon Tyne, UK, 1:100), CD34 (clone QBEnd 10, Dako, Glostrup Denmark, 1:50), nestin (clone 10c2, Santa Cruz Biotechnology, Santa Cruz, CA, 1:500),  $\alpha$ -smooth muscle actin ( $\alpha$ -SMA) (clone 1A4, Dako, Glostrup, Denmark, 1:50), desmin (clone D33, Biocare Medical PM 036 AA, Biocare Medical, Concord, CA, 1:100) and CD31 (clone JC70A, Dako, Glostrup Denmark, 1:50) were used. Sections were deparaffinized, rehydrated, and rinsed in PBS buffer solution at pH 7.4 (for the nestin, CD34, CD31,  $\alpha$ -SMA and desmin antibodies) and in TBS buffer solution at pH 7.6 (for the CD117/c-kit and *DOG1* antibodies). Retrieval by incubation in specific buffer was completed as follows: (a) for CD34: EDTA, pH 9; (b) for the other antibodies: 0.01 M citrate retrieval solution, pH 6. The standard ABC technique used a DAB protocol. Appropriate blocking of endogenous peroxidase was

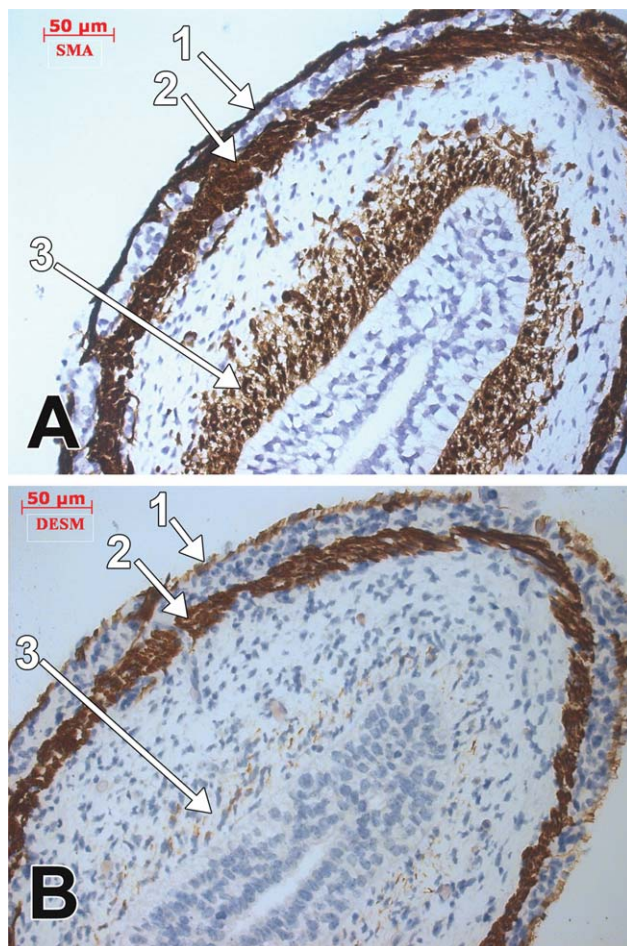


Fig. 1. Oblique section of the esophagus wall in a 27 mm. human embryo, immune labeling with  $\alpha$ -SMA (A) and desmin (B) antibodies. 1. longitudinal muscle layer; 2. circular muscle layer; 3. lamina propria.

completed before immunolabeling (Peroxidized 1, Biocare Medical, Concord, CA). Sections incubated with nonimmune serum served as negative controls. Sections were counterstained with Hematoxylin.

The microscopic slides were analyzed and micrographs were taken and scaled using a Zeiss working station, as previously described (Rusu, 2013).

## RESULTS

In the late embryo stage, the lower esophagus presented a mucosa comprising a pluristratified epithelium and lamina propria, submucosa, and muscularis consisting, in turn, of an inner circular layer and an outer longitudinal layer. The longitudinal and circular muscle layers were positively labeled by  $\alpha$ -SMA and desmin antibodies (Fig. 1) and were separated by a distinctive layer corresponding to the myenteric plexus. Moreover,  $\alpha$ -SMA consistent positive labeling was associated with the lamina propria and the adjacent inner part of the submucosa; a discrete desmin-positive phenotype was corresponding to the strong  $\alpha$ -SMA phenotype in this location (Fig. 1). In submucosa,  $\alpha$ -SMA seemingly

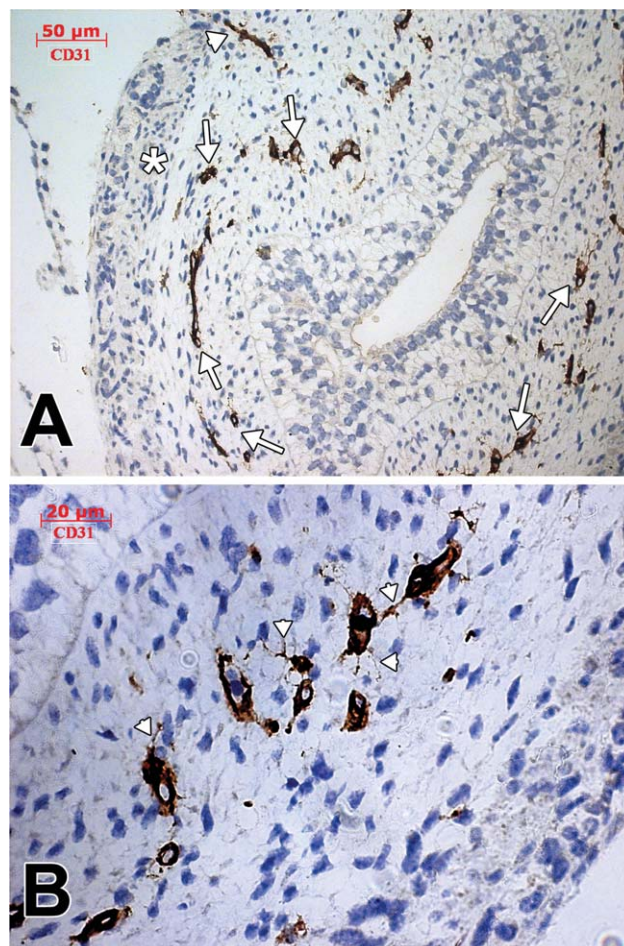


Fig. 2. Oblique section of the esophagus wall in a 27 mm. human embryo, immune labeling with CD31 antibodies. A. The microvascular layer identified with CD34 antibodies between the lamina propria and the submucosa is positively labeled with CD31 antibodies (arrows). A penetrating microvessel is indicated (arrowhead). The circular muscle layer (\*) lacks immune positive elements. B. ETCs label with CD31 antibodies and project into stroma moniliform dichotomizing processes (arrowheads).

labeled also microvessels; however doubts were kept on this diagnosis.

With CD31 antibodies (Fig. 2) endothelia were positively labeled: a distinctive microvascular layer was demonstrated in the inner part of the submucosa. Penetrating dichotomizing vessels were also identified. Endothelial cells projecting in the adjacent stroma thin moniliform processes were identified as endothelial tip cells (ETCs). The microvascular layer identified with CD31 antibodies was also CD34-positive; ETCs were also positively labeled by CD34 (Fig. 3). However, labeling with CD34 antibodies identified an outer positive network, mostly corresponding to the circular muscle layer (Fig. 3). Since in this location CD31 did not label any element, the network has been considered mesenchymal. Nestin-positive immune labeling was associated with the microvascular layer at the lamina propria – submucosa border (Fig. 4), and with the muscular coats identified with desmin and  $\alpha$ -SMA antibodies, but

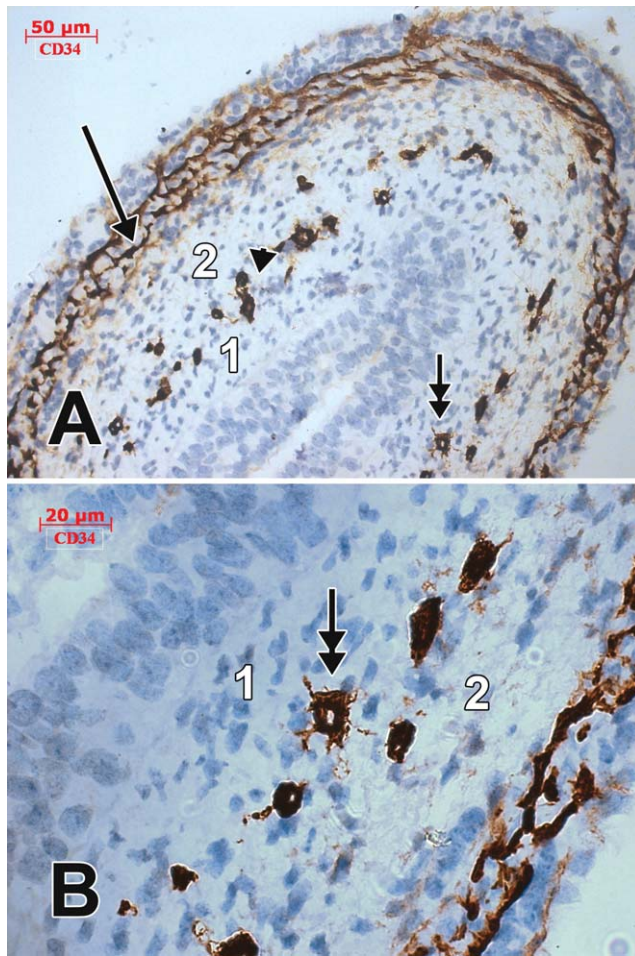


Fig. 3. Oblique section of the esophagus wall in a 27 mm. human embryo, immune labeling with CD34 antibodies. A. A mesenchymal network is identified within the circular muscle layer (arrow). A different microvascular layer (arrowhead) lies between the lamina propria (1) and the submucosa (2); ETCs are indicated (double-headed arrow in A and B).

with the myenteric plexus layer between the circular and longitudinal muscle layers.

CD117/c-kit positive labeling was associated mostly with the myenteric plexus layer, where ICCs with long dichotomizing processes were found (Fig. 5). These c-kit positive ICCs (ICC-MY) were configuring a complete circumferential network; they were sending long processes coursing circumferentially on the outer surface of the circular muscle layer, and processes which were penetrating in this muscle layer, with a radial or oblique course. Also c-kit positive cells and processes were found within the inner part of the circular muscle layer (ICC-IM). With *DOG1* antibodies, a weak positive reaction was found in the circular and longitudinal muscle layers (Fig. 6). A strong *DOG1* positive immune labeling was found for the ICC-MY (cell bodies and processes) applied on the outer surface of the circular muscle layer, and for ICC-IM scarcely distributed within the inner part of the circular muscle layer (Fig. 6).

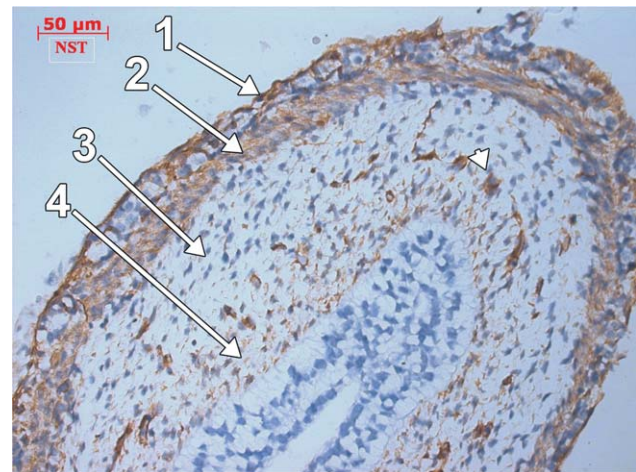


Fig. 4. Oblique section of the esophagus wall in a 27 mm. human embryo, immune labeling with nestin antibodies. 1. longitudinal muscle layer; 2. circular muscle layer; 3. submucosa; 4. lamina propria. The microvascular layer at the submucosa/lamina propria border is indicated (arrowhead).

## DISCUSSION

In this study, evidence was brought on the esophageal microvascular developmental morphology in late stage embryos. Taking into account the CD31 and CD34 labeling, it appears that a microvascular layer, supplied by penetrating vessels, lies at the borderline between lamina propria and submucosa, and it is immature, as proven by the ongoing processes of sprouting angiogenesis supported by ETCs. The layer can be important when investigations are conducted in angiogenesis dependent diseases, such as Barrett's esophagus (a premalignant condition of the lower esophagus), as it may provide further proliferating endothelial cells of new blood vessels. These cells may serve as an important source for diagnostic markers specific for the evolution of Barrett's epithelium (Auvinen et al., 2002). It is known that ETCs conduct sprouting angiogenesis (Stanescu et al., 2012; Phng et al., 2013; Rusu et al., 2013c); the ETCs processes invade the stromal compartment by a different stage migration, project filopodial, and moniliform processes, and are under the influence of the stromal cell compartment (Rusu et al., 2013a). It was demonstrated that ETCs label with CD34 antibodies (Siemerink et al., 2012; Stanescu et al., 2012; Rusu et al., 2013a). This study shows that ETCs also label with CD31 antibodies. It is known that nestin, which is a type VI intermediate filament protein, labels various tissues during embryogenesis, such as muscle fibers, hepatocytes, and renal progenitors (Krupkova et al., 2010). Nestin also labels neural crest stem cells and endothelial cells in newly formed blood vessels (Rusu et al., 2013b). This is consistent with our findings of nestin-positive labeling of the microvessels at the submucosa-lamina propria border. Conversely, immunoreactivity for  $\alpha$ -SMA and nestin, found at the border of lamina propria and submucosa, may suggest the existence of an immature lamina muscularis mucosae. Moreover, the external muscle coats nestin-positive labeling seemed not unusual, as long as transient nestin expression was found in immature

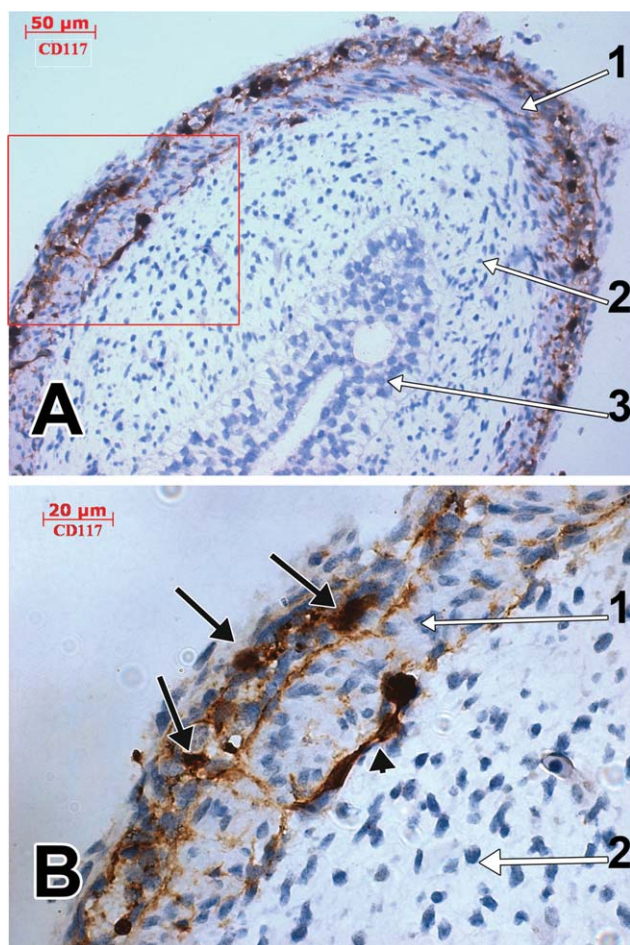


Fig. 5. Oblique section of the esophagus wall in a 27 mm. human embryo, immune labeling with CD117/c-kit antibodies. Inset in A is evaluated at a higher magnification (B). CD117/c-kit positive interstitial Cajal cells correspond topographically to the myenteric plexus (B, black arrows) but also lay on the submucosal boundary of the circular layer (B, black arrowhead). 1. circular layer of tunica muscularis; 2. lamina propria; 3. epithelium.

esophageal smooth muscle cells in early stages of development (Su et al., 2011).

It is actually established that ICCs originate from mesenchyme and not from the neural crest (Lecoin et al., 1996; Young, 1999; Timmermans, 2001; Wallace and Burns, 2005). ICCs and smooth muscle cells may have common precursors (Young, 1999; Timmermans, 2001). Our results support, as second time evidence, the findings of Radenkovic et al. (2010) who demonstrated that in late stage embryos the layer of ICC-MY is morphologically defined in esophagus. Moreover, c-kit and *DOG1* labeling demonstrate that scarce intramuscular ICCs and networks are defined in this stage. This is comparable with the ICCs topography in adult esophagus, where these can be found within the muscle bundles, a few in their proximity, but the majority are found at the periphery of the bundles (Faussonne-Pellegrini and Cortesini, 1985).

It was established that ICC-MY act as primary pacemaker cells (Takaki et al., 2010; Rusu et al., 2011a), and intracellular calcium dynamics play an important role in

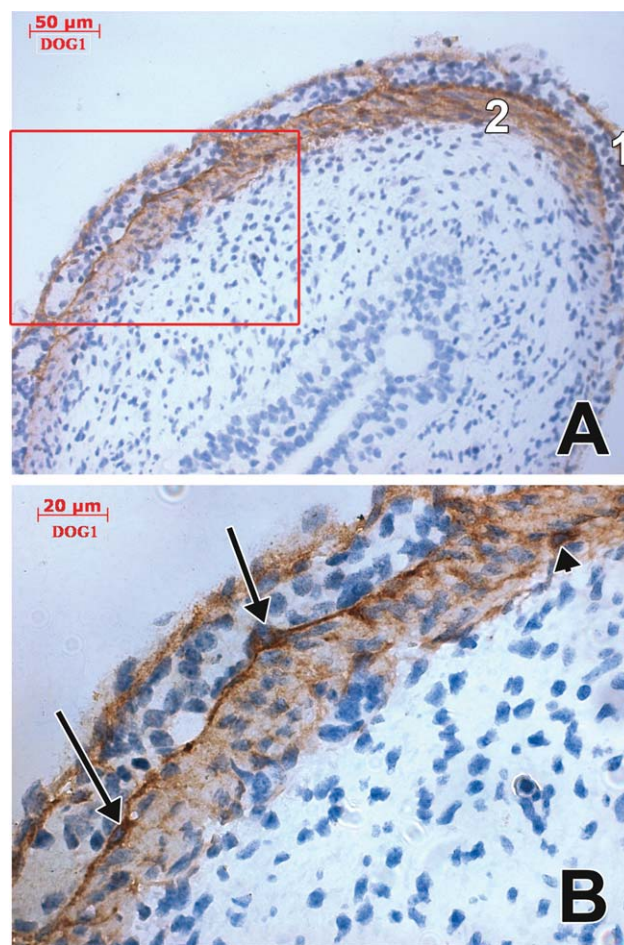


Fig. 6. Oblique section of the esophagus wall in a 27 mm. human embryo, immune labeling with *DOG1* antibodies. Inset in A is evaluated at a higher magnification (B). 1. longitudinal layer of tunica muscularis; 2. circular layer of tunica muscularis. Immune positive cells are identified on the outer side of the circular muscle layer (arrows) and in the deep part of the circular muscle layer (arrowhead).

the pacemaking (Takaki et al., 2010). Intracellular calcium oscillations periodically activate plasmalemmal channels, such as  $\text{Ca}^{2+}$ -activated  $\text{Cl}^-$  channels (Takaki et al., 2010). Anoctamin 1 (*Ano1*, *TMEM16A*, *DOG1*) is a major component of the plasmalemmal  $\text{Ca}^{2+}$ -activated  $\text{Cl}^-$  channels (CaCCs) (Ferrera et al., 2010; Cipriani et al., 2011; Kunzelmann et al., 2011; Shimizu et al., 2013; Simon et al., 2013). In this regard, the evidence of a sublayer of *DOG1* positive ICC-MY is suggestive for a subpopulation of ICC-MY being qualified for pacemaking at this early developmental stage.

Further studies are however needed to explore the c-kit and *DOG1* phenotypes dynamics during the fetal and perinatal periods, and use of double label immunohistochemistry could add useful information.

#### ACKNOWLEDGMENTS

This study was supported by the Sectoral Operational Programme Human Resources Development (SOP HRD) (to C.V. Poalelungi).

## LITERATURE CITED

- Auvinen MI, Sihvo EI, Ruohtula T, Salminen JT, Koivistoinen A, Siivola P, Ronnholm R, Ramo JO, Bergman M, Salo JA. 2002. Incipient angiogenesis in Barrett's epithelium and lymphangiogenesis in Barrett's adenocarcinoma. *J Clin Oncol* 20:2971-2979.
- Carles A, Millon R, Cromer A, Ganguli G, Lemaire F, Young J, Wasylyk C, Muller D, Schultz I, Rabouel Y, Dembele D, Zhao C, Marchal P, Ducray C, Bracco L, Abecassis J, Poch O, Wasylyk B. 2006. Head and neck squamous cell carcinoma transcriptome analysis by comprehensive validated differential display. *Oncogene* 25:1821-1831.
- Chen Y, Shamu T, Chen H, Besmer P, Sawyers CL, Chi P. 2011. Visualization of the interstitial cells of cajal (ICC) network in mice. *J Vis Exp* doi:10.3791/2802.
- Ciontea SM, Radu E, Regalia T, Ceafalan L, Cretoiu D, Gherghiceanu M, Braga RI, Malincenco M, Zagrean L, Hinescu ME, Popescu LM. 2005. C-kit immunopositive interstitial cells (Cajal-type) in human myometrium. *J Cell Mol Med* 9:407-420.
- Cipriani G, Serboiu CS, Gherghiceanu M, Faussonne-Pellegrini MS, Vannucchi MG. 2011. NK receptors, Substance P, Anol1 expression and ultrastructural features of the muscle coat in Cav-1(-/-) mouse ileum. *J Cell Mol Med* 15:2411-2420.
- Faussonne-Pellegrini MS, Cortesini C. 1985. Ultrastructural features and localization of the interstitial cells of Cajal in the smooth muscle coat of human esophagus. *J Submicrosc Cytol* 17:187-197.
- Faussonne-Pellegrini MS, Pantalone D, Cortesini C. 1990. Smooth muscle cells, interstitial cells of Cajal and myenteric plexus interrelationships in the human colon. *Acta Anat (Basel)* 139:31-44.
- Faussonne-Pellegrini MS, Thuneberg L. 1999. Guide to the identification of interstitial cells of Cajal. *Microsc Res Tech* 47:248-266.
- Ferrera L, Caputo A, Galiotta LJ. 2010. TMEM16A protein: a new identity for Ca(2+)-dependent Cl(-) channels. *Physiology (Bethesda)* 25:357-363.
- He X, Yang WC, Wen XY, Tang D, Xiao L, Han J, Yu B, Zhang W, Mei F. 2012. Late embryonic and postnatal development of interstitial cells of cajal in tissue esophagus: distribution, proliferation and kit dependence. *Cells Tissues Organs* 196:175-188.
- Huang Y, Mei F, Yu B, Zhang HJ, Han J, Jiang ZY, Zhou DS. 2009. Distribution of the interstitial Cajal-like cells in the gallbladder and extrahepatic biliary duct of the guinea-pig. *Acta Histochemica* 111:157-165.
- Huizinga JD, Faussonne-Pellegrini MS. 2005a. About the presence of interstitial cells of Cajal outside the musculature of the gastrointestinal tract. *J Cell Mol Med* 9:468-473.
- Huizinga JD, Faussonne-Pellegrini MS. 2005b. About the presence of interstitial cells of Cajal outside the musculature of the gastrointestinal tract. *J Cell Mol Med* 9:468-473.
- Hwang SJ, Blair PJ, Britton FC, O'Driscoll KE, Hennig G, Bayguinov YR, Rock JR, Harfe BD, Sanders KM, Ward SM. 2009. Expression of anoctamin 1/TMEM16A by interstitial cells of Cajal is fundamental for slow wave activity in gastrointestinal muscles. *J Physiol* 587:4887-4904.
- Krupkova O, Jr., Loja T, Zambo I, Veselska R. 2010. Nestin expression in human tumors and tumor cell lines. *Neoplasma* 57:291-298.
- Kunzelmann K, Tian Y, Martins JR, Faria D, Kongsuphol P, Ousingsawat J, Thevenod F, Roussa E, Rock J, Schreiber R. 2011. Anoctamins. *Pflugers Arch* 462:195-208.
- Lecoin L, Gabella G, Le Douarin N. 1996. Origin of the c-kit-positive interstitial cells in the avian bowel. *Development* 122:725-733.
- Lee CH, Liang CW, Espinosa I. 2010. The utility of discovered on gastrointestinal stromal tumor 1 (DOG1) antibody in surgical pathology-the GIST of it. *Adv Anat Pathol* 17:222-232.
- Miettinen M, Wang ZF, Lasota J. 2009. DOG1 antibody in the differential diagnosis of gastrointestinal stromal tumors: a study of 1840 cases. *Am J Surg Pathol* 33:1401-1408.
- Phng LK, Stanchi F, Gerhardt H. 2013. Filopodia are dispensable for endothelial tip cell guidance. *Development* 140:4031-4040.
- Poole DP, Van Nguyen T, Kawai M, Furness JB. 2004. Protein kinases expressed by interstitial cells of Cajal. *Histochem Cell Biol* 121:21-30.
- Popescu LM, Faussonne-Pellegrini MS. 2010. TELOCYTES - a case of serendipity: the winding way from Interstitial Cells of Cajal (ICC), via Interstitial Cajal-Like Cells (ICLC) to TELOCYTES. *J Cell Mol Med* 14:729-740.
- Popescu LM, Hinescu ME, Ionescu N, Ciontea SM, Cretoiu D, Ardelean C. 2005. Interstitial cells of Cajal in pancreas. *J Cell Mol Med* 9:169-190.
- Radenkovic G, Ilic I, Zivanovic D, Vlajkovic S, Petrovic V, Mitrovic O. 2010. C-kit-immunopositive interstitial cells of Cajal in human embryonal and fetal oesophagus. *Cell Tissue Res* 340:427-436.
- Rumessen JJ, Thuneberg L. 1982. Plexus muscularis profundus and associated interstitial cells. I. Light microscopical studies of mouse small intestine. *Anat Rec* 203:115-127.
- Rumessen JJ, Thuneberg L, Mikkelsen HB. 1982. Plexus muscularis profundus and associated interstitial cells. II. Ultrastructural studies of mouse small intestine. *Anat Rec* 203:129-146.
- Rusu MC. 2013. Adult leptomeningeal cerebellar heterotopia in contact with the posterior inferior cerebellar artery. *Anat Sci Int* 88:101-105.
- Rusu MC, Didilescu AC, Stanescu R, Pop F, Manoiu VM, Jianu AM, Valcu M. 2013a. The mandibular ridge oral mucosa model of stromal influences on the endothelial tip cells: an immunohistochemical and TEM study. *Anat Rec (Hoboken)* 296:350-363.
- Rusu MC, Hostiu S, Loreto C, Paduraru D. 2013b. Nestin immune labeling in human adult trigeminal ganglia. *Acta Histochemica* 115:86-88.
- Rusu MC, Motoc AG, Pop F, Folescu R. 2013c. Sprouting angiogenesis in human midterm uterus and fallopian tube is guided by endothelial tip cells. *Anat Sci Int* 88:25-30.
- Rusu MC, Nicolescu MI, Jianu AM, Lighezan R, Manoiu VS, Paduraru D. 2012. Esophageal telocytes and hybrid morphologies. *Cell Biol Int* 36:1079-1088.
- Rusu MC, Pop F, Hostiu S, Curca GC, Streinu-Cercel A. 2011a. Extrahepatic and intrahepatic human portal interstitial Cajal cells. *Anat Rec (Hoboken)* 294:1382-1392.
- Rusu MC, Pop F, Hostiu S, Dermengiu D, Lala AI, Ion DA, Manoiu VS, Mirancea N. 2011b. The human trigeminal ganglion: c-kit positive neurons and interstitial cells. *Ann Anat* 193:403-411.
- Sadler TW, Langman J. 2009. Langman's medical embryology, 11th ed. Baltimore, Md.: Lippincott William & Wilkins.
- Sanders KM. 2006. Interstitial cells of Cajal at the clinical and scientific interface. *J Physiol* 576:683-687.
- Sanders KM, Zhu MH, Britton F, Koh SD, Ward SM. 2012. Anoctamins and gastrointestinal smooth muscle excitability. *Exp Physiol* 97:200-206.
- Shimizu T, Iehara T, Sato K, Fujii T, Sakai H, Okada Y. 2013. TMEM16F is a component of a Ca2+-activated Cl- channel but not a volume-sensitive outwardly rectifying Cl- channel. *Am J Physiol Cell Physiol* 304:C748-759.
- Siemerink MJ, Klaassen I, Vogels IM, Griffioen AW, Van Noorden CJ, Schlingemann RO. 2012. CD34 marks angiogenic tip cells in human vascular endothelial cell cultures. *Angiogenesis* 15:151-163.
- Simon S, Grabellus F, Ferrera L, Galiotta LJ, Schwindenhammer B, Muehlenberg T, Taeger G, Eilers G, Treckmann J, Breitenbuecher F, Schuler M, Taguchi T, Fletcher JA, Bauer S. 2013. DOG1 regulates growth and IGFBP5 in gastrointestinal stromal tumors. *Cancer Res* 73:3661-3670.
- Stanescu R, Didilescu AC, Jianu AM, Rusu MC. 2012. Angiogenesis in the reparatory mucosa of the mandibular edentulous ridge is driven by endothelial tip cells. *Rom J Morphol Embryol* 53:375-378.
- Su PH, Wang TC, Wong ZR, Huang BM, Yang HY. 2011. The expression of nestin delineates skeletal muscle differentiation in the developing rat esophagus. *J Anat* 218:311-323.
- Suciu L, Popescu LM, Gherghiceanu M, Regalia T, Nicolescu MI, Hinescu ME, Faussonne-Pellegrini MS. 2010. Telocytes in human term placenta: morphology and phenotype. *Cells Tissues Organs* 192:325-339.
- Takaki M. 2003. Gut pacemaker cells: the interstitial cells of Cajal (ICC). *J Smooth Muscle Res* 39:137-161.

- Takaki M, Suzuki H, Nakayama S. 2010. Recent advances in studies of spontaneous activity in smooth muscle: ubiquitous pacemaker cells. *Prog Biophys Mol Biol* 102:129–135.
- Thuneberg L, Peters S. 2001. Toward a concept of stretch-coupling in smooth muscle. I. Anatomy of intestinal segmentation and sleeve contractions. *Anat Rec* 262:110–124.
- Timmermans JP. 2001. Interstitial cells of Cajal: is their role in gastrointestinal function in view of therapeutic perspectives underestimated or exaggerated? *Folia Morphol (Warsz)* 60:1–9.
- Wallace AS, Burns AJ. 2005. Development of the enteric nervous system, smooth muscle and interstitial cells of Cajal in the human gastrointestinal tract. *Cell Tissue Res* 319:367–382.
- Ward SM, Sanders KM. 2001. Interstitial cells of Cajal: primary targets of enteric motor innervation. *Anat Rec* 262:125–135.
- West RB, Corless CL, Chen X, Rubin BP, Subramanian S, Montgomery K, Zhu S, Ball CA, Nielsen TO, Patel R, Goldblum JR, Brown PO, Heinrich MC, van de Rijn M. 2004. The novel marker, DOG1, is expressed ubiquitously in gastrointestinal stromal tumors irrespective of KIT or PDGFRA mutation status. *Am J Pathol* 165:107–113.
- Wu JJ, Rothman TP, Gershon MD. 2000. Development of the interstitial cell of Cajal: origin, kit dependence and neuronal and non-neuronal sources of kit ligand. *J Neurosci Res* 59:384–401.
- Young HM. 1999. Embryological origin of interstitial cells of Cajal. *Microsc Res Tech* 47:303–308.